



PPDM<sup>TM</sup>

## ***NDR 2019 Workshop***

Today's digital world demands data. It's the fuel that feeds every key industry process. It is used to fulfill regulatory and legal requirements, enables good decision making, feeds analytics engines and ensures effective business operations.

This interactive session will focus on the challenges faced by the regulatory world as they build the systems necessary to steward their data assets. Together, we will focus on the challenges of logistics, technology, communications, data quality and completeness, and retention.

**You can still participate!**

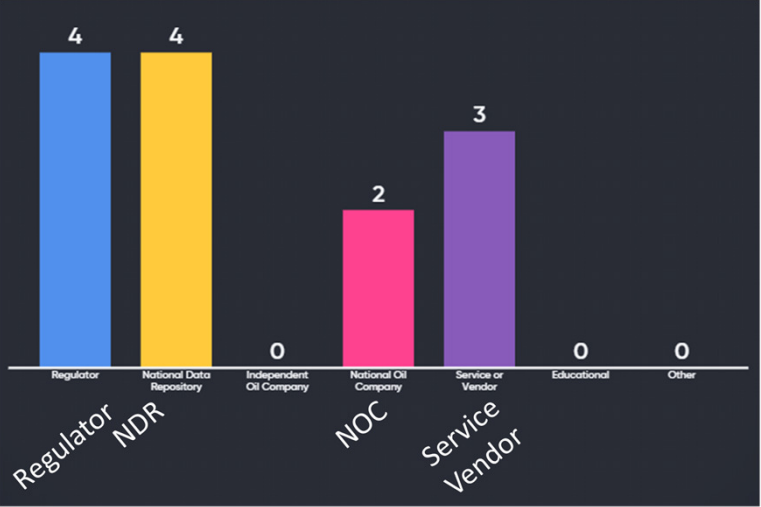
**We are data organizations, and  
we know you recognize the  
importance of collecting data!**

**[www.MENTI.com](http://www.MENTI.com)**

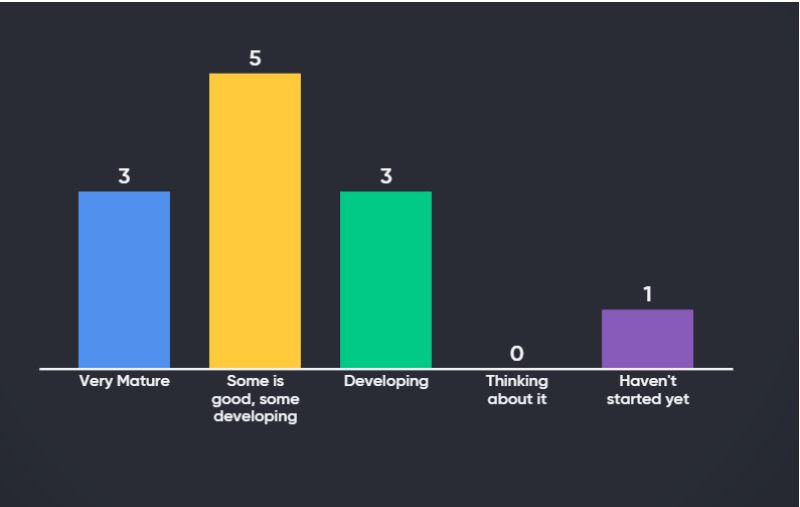
**Enter Code: 68 44 94**



# What Kind of Organization?



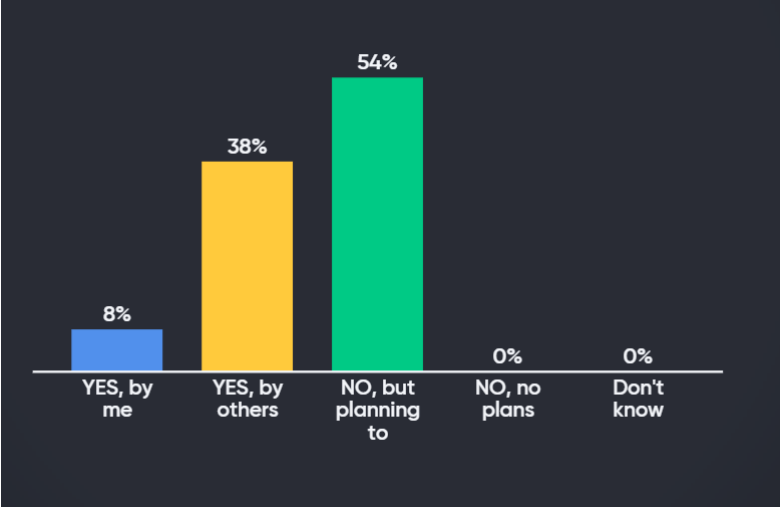
# How mature is data capability?



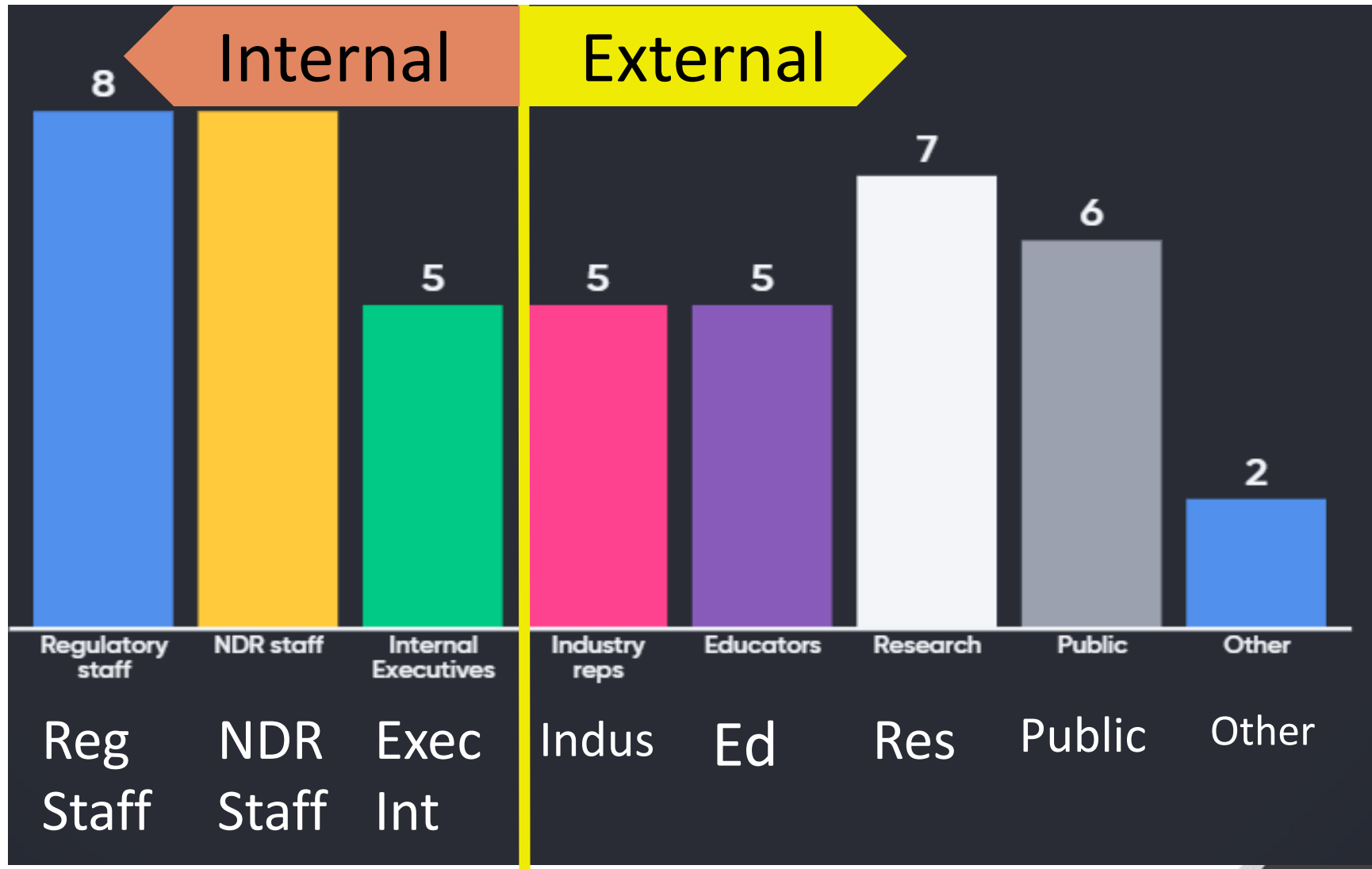
# What countries?



# Doing Analytics Now?



# Who has access to your data?



Open Data  Useful Data



# Do you have data autonomy?



Use proprietary software  
with vendor model



Use in house software with  
in house model



Use software based on  
industry standards



Data systems are based  
on industry standards



Data is managed by  
vendors



Data is managed by  
consultants or contractors



Data is managed by  
employees

# The Regulatory Data Stack

Government  
Policy

Legislation

Regulation

Reg guidelines &  
instructions

Forms and  
procedures

Applications and  
Interfaces

Technology  
(servers, NW)

Data stores

Some parts of the regulatory stack can create limitations to creating great processes and data.

Example:

if your data store doesn't have places to put hydraulic fracture fluids, but your regulations require them to be reported, storing and managing this data (usefully) may be difficult.

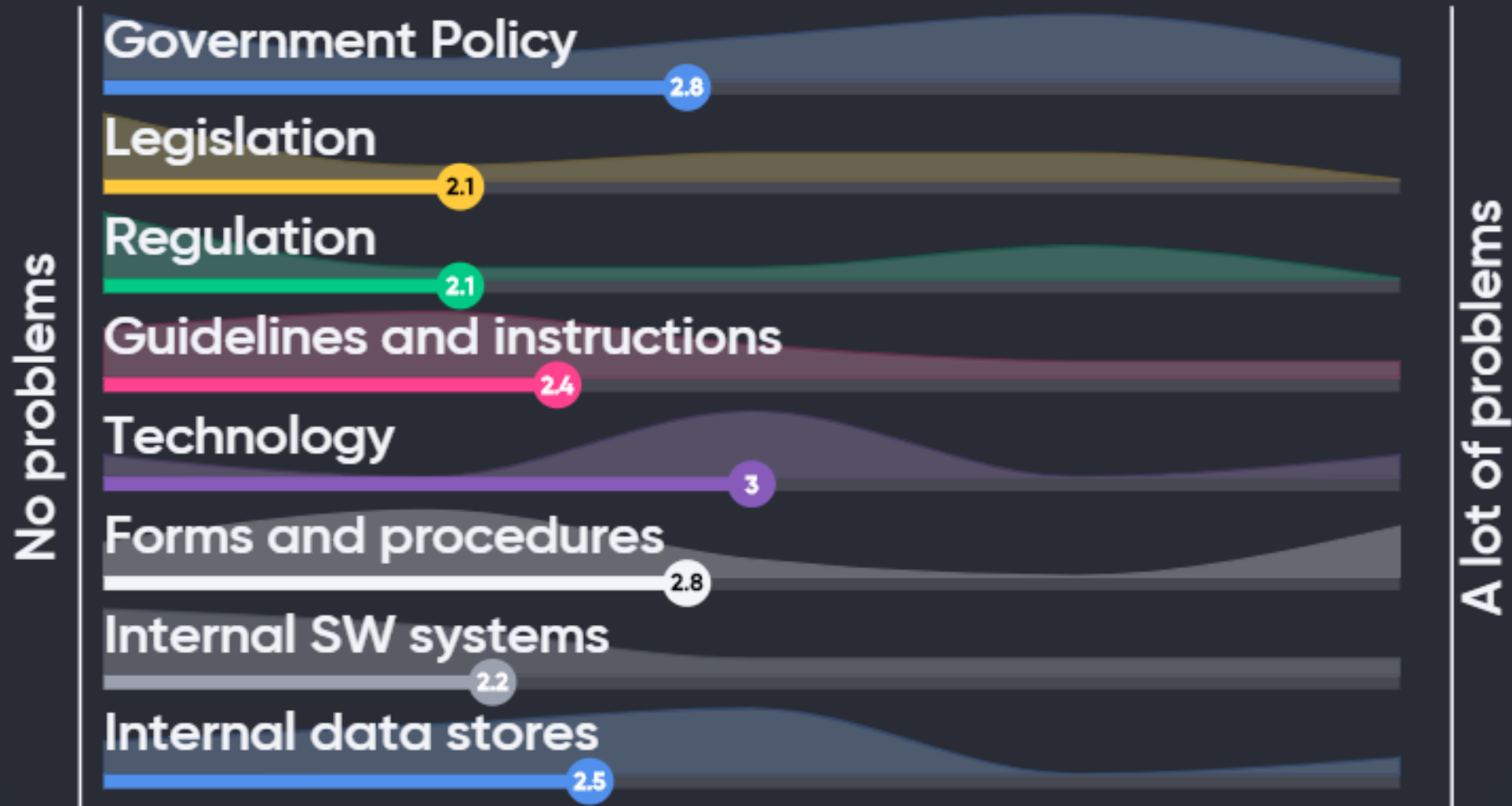
Example:

Your regulations require the submission of seismic data on tapes, and your client stores this data in the cloud.



PPDM<sup>TM</sup>

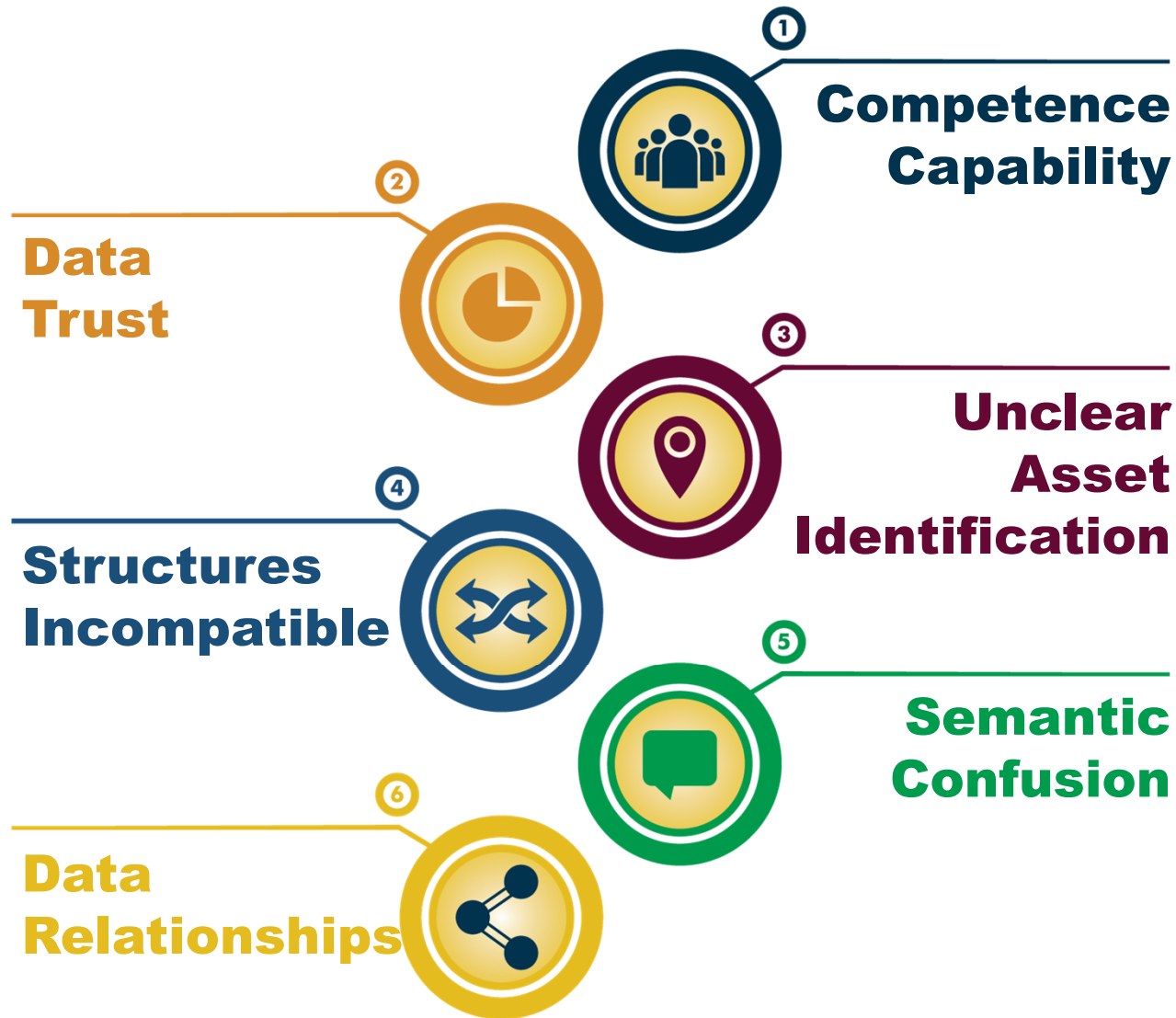
# The Regulatory Data Stack



PPDM™



# A Few Key Data Challenges



# Credentials and Training Programs / Year

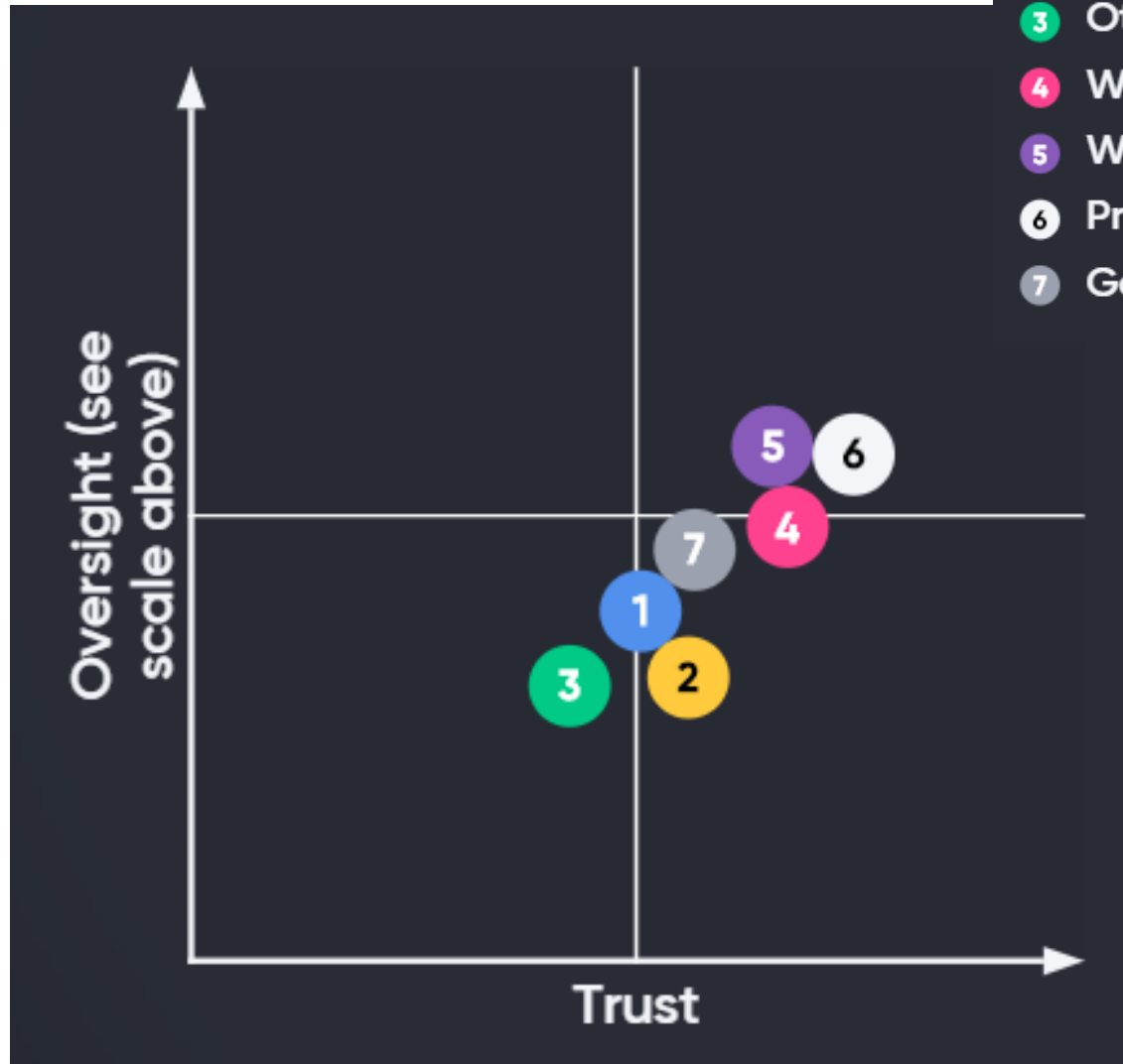


PPDM<sup>TM</sup>

# Data Oversight and Trust

What level of oversight do you have?

1. We have NO control
2. Ask the operator to fix, no penalty
3. Require the operator to fix, no penalty
4. We can fix internally
5. Require operator to fix, penalties apply

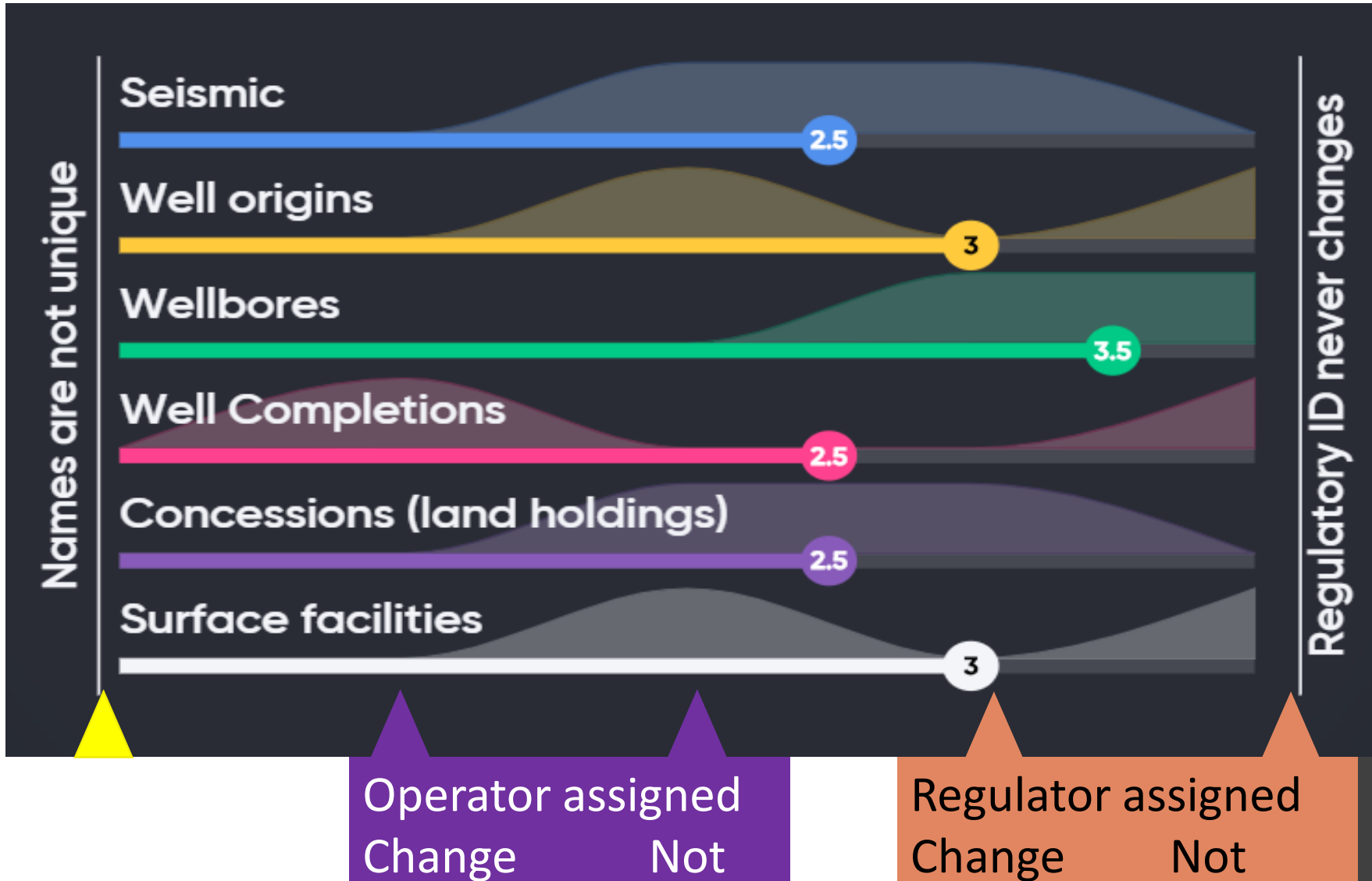


- 1 Seismic navigation data
- 2 Seismic processed
- 3 Other geophysical (grav, mag...)
- 4 Well header and location data
- 5 Well logs, cores, test etc
- 6 Production data
- 7 Geochem, paleo etc



PPDM<sup>TM</sup>

# Asset Identification



PPDM™

# Structural Compatibility

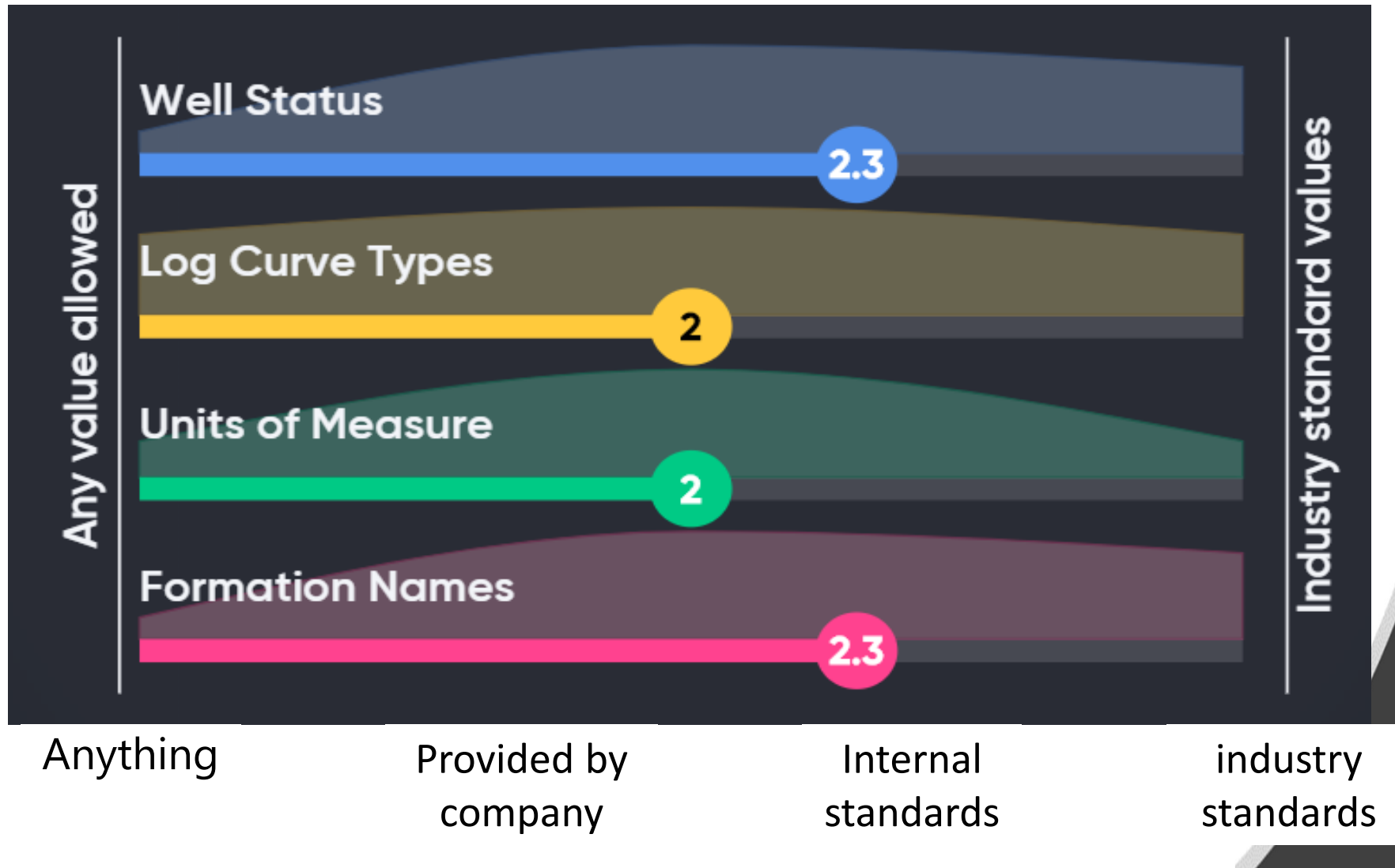
Do you have the same data in more than one data store?

Do you combine data from one data store with another?



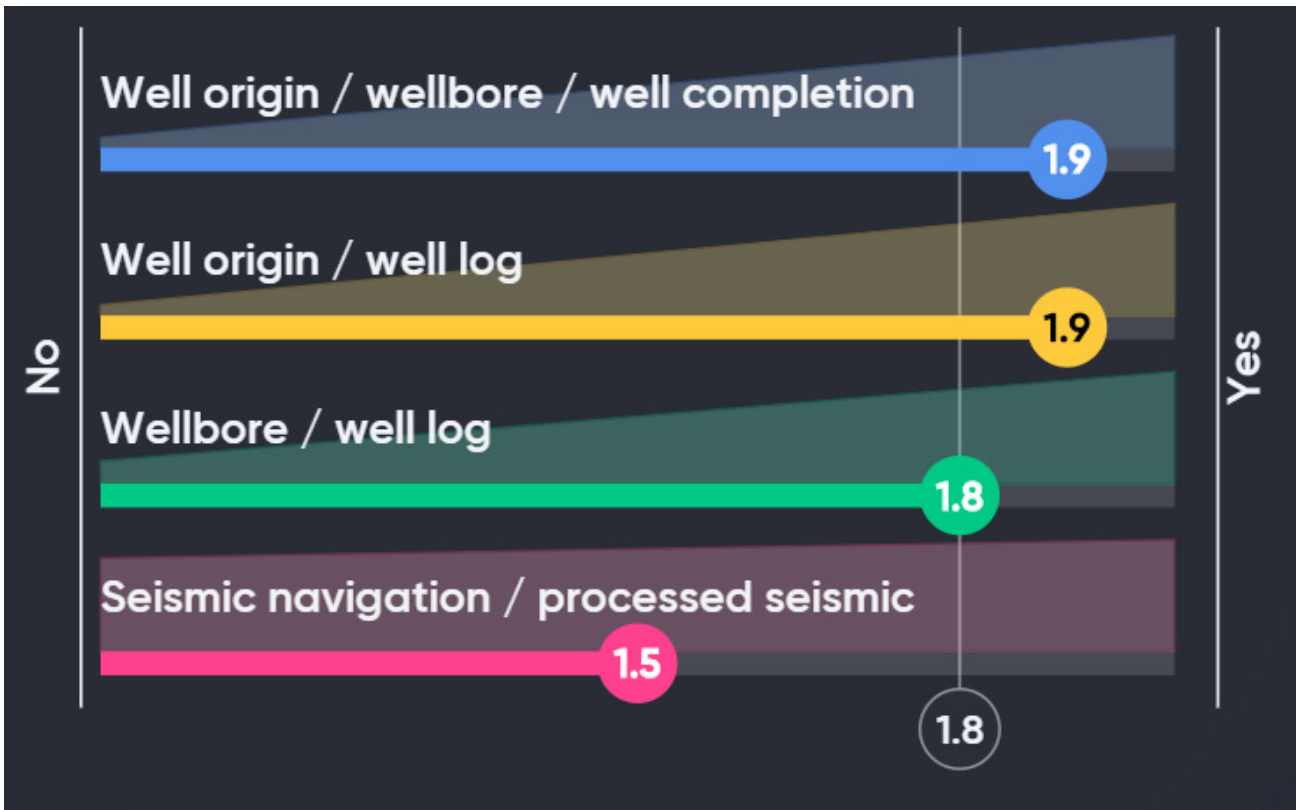
PPDM<sup>TM</sup>

# Do you use set vocabularies?



PPDM™

# Do you capture object relationships?



Do you capture well hierarchies?

Are logs tied to well headers or wellbores?

Are seismic navigation and processed seismic linked?



PPDM™